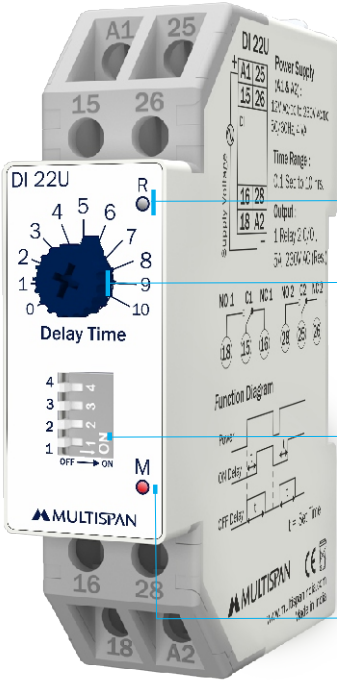


DI	ON OFF Delay Timer
Model	DI 22U






RELAY OUTPUT

KNOB
for time range setting

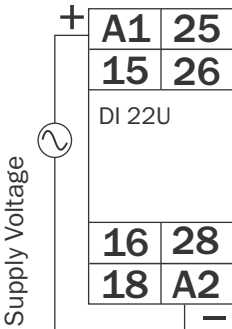
PIANO SWITCH
for time range selection &
Delay on/off mode selection

MAIN LED
for visualisation of power
supply status

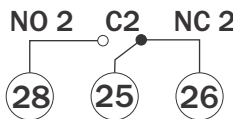
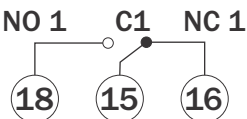
	Power Supply : 12V DC to 240V DC & 20 to 240V AC, 50/60 Hz
	Output: 1 Relay O/P (2 C/O, 5A 230 VAC)
	Time Range : 0.1 sec to 10 Sec/Min/hour

Terminal Connection:

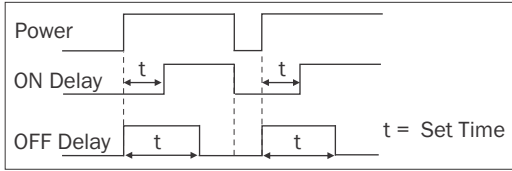
DI 22U



Power Supply (A1 & A2) :
12V DC to 240V DC &
20 to 240V AC ,50/60Hz



Timing Diagram:



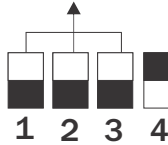
Dip switch selection:

SW 1	SW 2	SW 3	Multiplier (Knob Indication)	Range
ON	ON	ON	0.1 Sec X 10	1 Sec
OFF	ON	ON	1 Sec X 10	10 Sec
ON	OFF	ON	3 Sec X 10	30 Sec
OFF	OFF	ON	10 Sec X 10	100 Sec
ON	ON	OFF	1 min X 10	10 Min
OFF	ON	OFF	3 min X 10	30 Min
ON	OFF	OFF	10 min X 10	100 Min
OFF	OFF	OFF	1 Hrs. X 10	10 hrs.



Switch Settings

Switch-1,2 & 3 for
time range selection

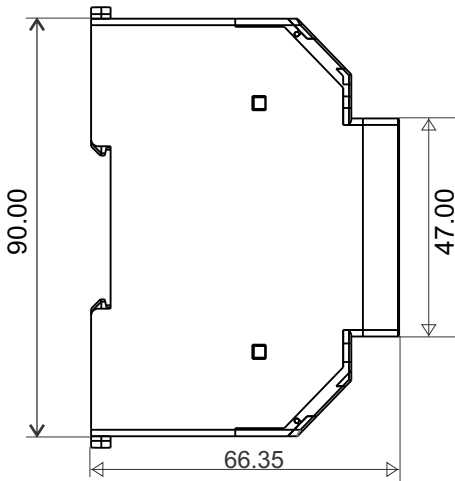


Switch 4

Switch 4 for Mode selection

ON	Delayed OFF
OFF	Delayed ON

Dimension



NOTE:
All dimension are in mm.

Multispan reserves the right to change specifications without prior notice. Printing and typographical errors reserved.
Product improvement and upgrade is a constant procedure.

Multispan Control Instruments Pvt. Ltd.

72/B, Phase 1, GIDC Estate, Vatva, Ahmedabad-382445, Gujarat, India.

☎ +91-9978991476/9978991474/9978991482

✉ Service@multispanindia.com

Follow us



www.multispanindia.com